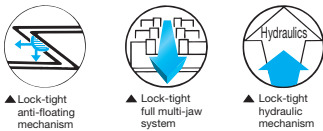


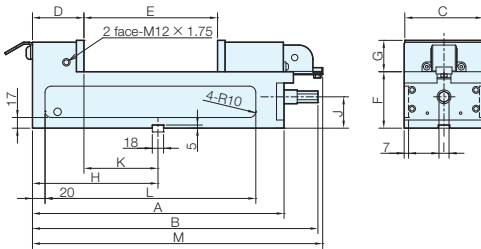
LTCV

LTCV-H

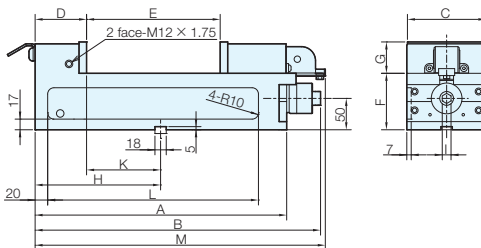
LTCV-TH



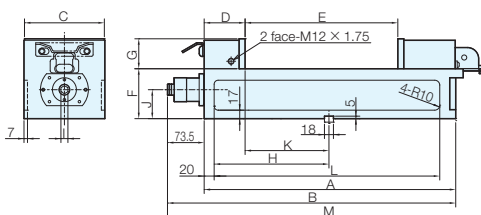
LTCV mechanical type



LTCV-(S)H hydraulic type



LTCV-TH hydraulic type



RoHS Compliant

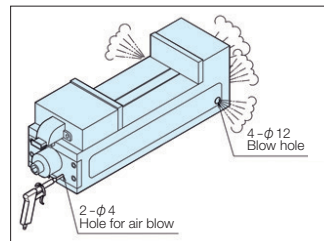


No.E-990

Lock-Tight CV Precision Machine Vises

Accessories Standard guide block (2 pieces per set) compatible T-slot width 18 mm ... 1 set
 Standard clamping set (2 pieces per set) compatible T-slot width 18 mm ... 2 sets
 Handle ... 1 piece, Eyebolt for lifting up ... 1 set

- As long as the models are the same, all vises can be matched within 0.01mm or less in terms of height and distance from the guide key to the stationary jaw plate. (All vises have matched specifications as standard)
- Chips are prevented from entering into the main body by a retractable chip cover.
- The workpiece is prevented from lifting up by anti-floating mechanism.
- High accuracy that surpasses the former JISO standards.
- Sliding surfaces have been flame heat treated (HRC45) and offer excellent wear resistance.
- The main body is ductile, preventing bending and breakage during tightening.
- The main body and stationary jaw have a one piece construction that maintains high rigidity.
- The jaw opening is nearly double that of vises in the same class, allowing clamping of large workpieces.
- Has a large jaw depth, enabling secure clamping of tall workpieces.
- Fitted with a hydraulic compensation mechanism as an emergency measure when the clamping force drops.
- Coolant oil and fine chips that get into the main body can be taken away from blow holes easily.
- The mechanical type allows for operation by handle on the stationary jaw side, and the LTCV-TH allows for operation by handle on the stationary jaw side that has a hydraulic unit. Operation from the stationary jaw side reduces the workpiece desorption distance, shortens the set-up time, and reduces the load on the worker.
- In the SJ type (LTCV-S, SH), the jaw plates from the standard type (LTCV, LTCV-H) are replaced with step jaw plates.

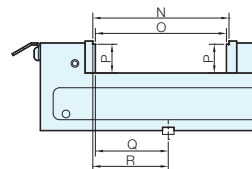


Air blow mechanism



On the mechanical type, the handle can also be operated from the stationary jaw side.

LTCV-S, SH SJ type



Base Elements

Clamp Units

Clamping Parts

Machine Vises

Drilling Vises

Vibration Isolation

Surface Plates and Measurement Instruments

Index

Size Chart

No.	A	B	C	D	E	F	G	H	I	J	K	L	M	N	O	P	Q	R
LTCV-100(S)	338	392	102	82	0-145	90	45	170	16	50	88	286	394.6	8-145	0-137	40	84	88
LTCV-125(S)	401	455	125	82	0-210	90	50	200	16	50	118	349	459.6	8-210	0-202	45	114	118
LTCV-160(S)	504	558	160	82	0-300	100	60	250	19	58	168	452	559.6	10-296	0-286	54	161	166
LTCV-200(S)	634	688	200	82	0-410	100	70	275	19	58	193	564	693.6	10-406	0-396	64	186	191
LTCV-100(S)H	338	393	102	82	0-145	90	45	170	14	50	88	286	394.6	8-145	0-137	40	84	88
LTCV-125(S)H	401	456	125	82	0-210	90	50	200	14	50	118	349	459.6	8-210	0-202	45	114	118
LTCV-160(S)H	504	559	160	82	0-300	100	60	250	14	58	168	452	559.6	10-296	0-286	54	161	166
LTCV-200(S)H	634	689	200	82	0-410	100	70	275	14	58	193	564	693.6	10-406	0-396	64	186	191
LTCV-160TH	504	559.5	160	82	0-300	100	60	250	14	58	168	452	633	-	-	-	-	-
LTCV-200TH	634	693.5	200	82	0-410	100	70	275	14	58	193	564	767	-	-	-	-	-

Specifications

Order No.	No.	Jaw Width	Jaw Depth	Maximum Jaw Opening	Standard Guide Block Width	Clamping Force (kN)	Weight (kg)
70115	LTCV100	102	45	145	18	30	20.5
70116	LTCV125	125	50	210	18	30	30
70117	LTCV160	160	60	300	18	30	50
80869	LTCV200	200	70	410	18	30	69
70118	LTCV100H	102	45	145	18	30	21
70119	LTCV125H	125	50	210	18	30	30
70120	LTCV160H	160	60	300	18	30	50
80870	LTCV200H	200	70	410	18	30	69
86025	LTCV100S	102	45	145	18	30	20.5
86026	LTCV125S	125	50	210	18	30	30
86027	LTCV160S	160	60	300	18	30	50
86028	LTCV200S	200	70	410	18	30	69
86029	LTCV100SH	102	45	145	18	30	21
86030	LTCV125SH	125	50	210	18	30	30
86031	LTCV160SH	160	60	300	18	30	50
86032	LTCV200SH	200	70	410	18	30	69
86033	LTCV-160TH	160	60	300	18	30	50
86034	LTCV-200TH	200	70	410	18	30	70

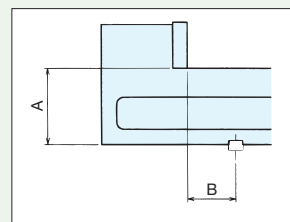
When ordering parallel products A and B align within 0.01 no matter how many pieces. As long as they are the same size, all products are parallel no matter how many pieces. There is no charge for parallel products.

◆ When purchasing for the first time

Since all pieces are parallel as long as they are the same size, simply order the model number that you need.

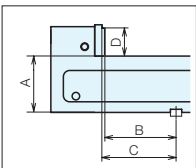
◆ For additional orders

Since all pieces are parallel as long as they are the same size, simply order the same model number that you already have.

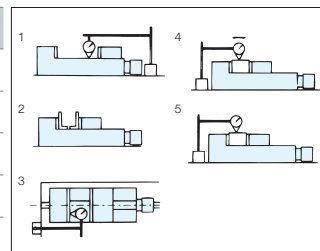


LTCV-S, SH parallel type

Accuracy Standards (Static Accuracy)



No.	Inspection Points (per 100 mm)	Former JIS Standard (O Grade)	Nabeya Standard Value
1	Parallelism between bottom surface of main body and sliding surface	0.015	0.010
2	Perpendicularity between jaw plate and sliding surface	0.030	0.015
3	Perpendicularity between T-slot and jaw plate surface of stationary jaw side.	0.015	0.015
4	Parallelism between top surface of clamped test block and bottom surface of main body	0.020	0.015
5	Lift-up of top surface of clamped test block	0.030	0.015



* For the SJ type, the parallel standards for matched specification products are as follows.

A: 0.01 or less

B, C, D: 0.02 or less

Base Elements

Clamp Units

Clamping Parts

Machine Vises

Drilling Vises

Vibration Isolation

Surface Plates and Measurement Instruments

Index